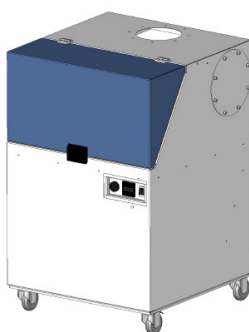




Operating and assembly instructions

Dust pre-separator for „filtoo“ / „AirToo“



TEKA Absaug- und Entsorgungstechnologie GmbH

Industriestraße 13 D-46342 Velen
Postfach 1137 D-46334 Velen

Tel.: +49 (0) 2863 9282-0

Fax: +49 (0) 2863 9282-72

E-Mail: sales@teka.eu

www.teka.eu

Contents

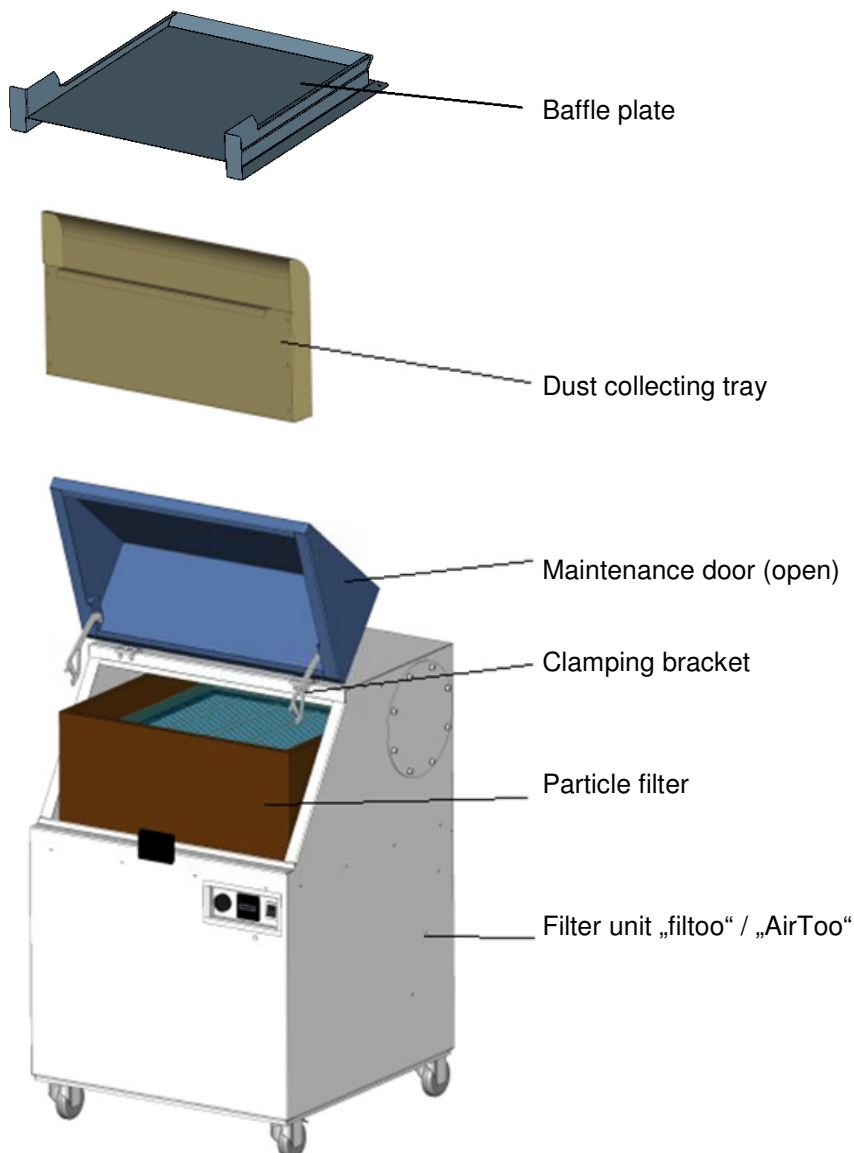
1	Functioning	2
2	Description of elements	2
3	Installation	3
3.1	Exchange of the clamping bracket	3
3.2	Use of the plug-on-rubber	3
3.3	Installation of the baffle plate and the dust collecting tray	4
3.4	Resetting of the pressure switch for the filter control	5
4	Maintenance	5

1 Functioning

The spark protection for the unit „filtoo“ / „AirToo“ can be retrofitted optionally and consists of two components, the baffle and the collecting tray.

The polluted air is sucked in via extraction elements (e.g. extraction arm) and gets inside the filter unit via the air intake. There the air hits the baffle plate and is led along the baffle plate towards the collecting tray. At the collecting tray the air deflects by 180°. Thus the air gets into the particle filter. Induced by the deflection the bigger particles, as for example extinct spark particles, fall into the collecting tray and stay there.

2 Description of elements



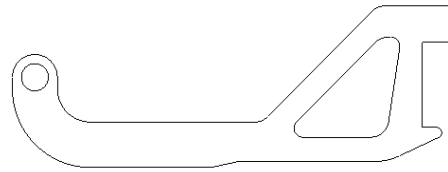
3 Installation

3.1 Exchange of the clamping bracket

The previous clamping bracket is exchanged against two new supplied clamping brackets. The shape of the previously used clamping bracket determines the choice of the type to be installed. When screwing the clamping bracket, the screw must be tightened; but only to the point where the clamping bracket is still movable. For this purpose it might be necessary to exchange the screws against the ones supplied alternatively.



Shape of the clamping bracket of the „filtoo“ till June 2012



Shape of the clamping brackets of the „filtoo“ since July 2012
Shape of the clamping brackets of the „AirToo“

3.2 Use of the plug-on-rubber

The supplied plug-on-rubber is only used with „filtoo“ / „AirToo“s which have been manufactured since end of 2013 (see information on the type plate).

The plug-on-rubber supports the airflow along the baffle plate. Mount the plug-on-rubber at the inside of the braces (see arrows). At the position where braces cross the plug-on-rubber has to be gashed.

The plug-on-rubber has no sealing function, but reduces the gap between baffle plate and the braces.

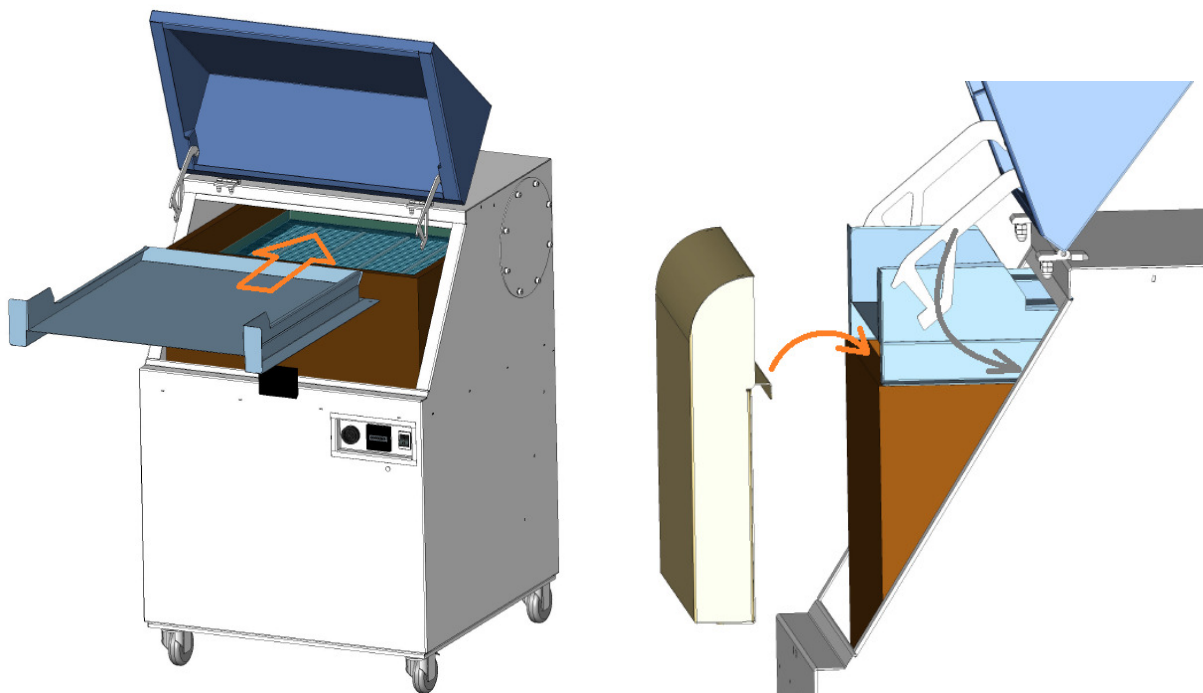


3.3 Installation of the baffle plate and the dust collecting tray

The baffle plate is inserted into the filter unit in the shown mounting direction (illustration on the left). The baffle plate lies on top of the particle filter and is pushed till it is adjacent to the back of the housing.

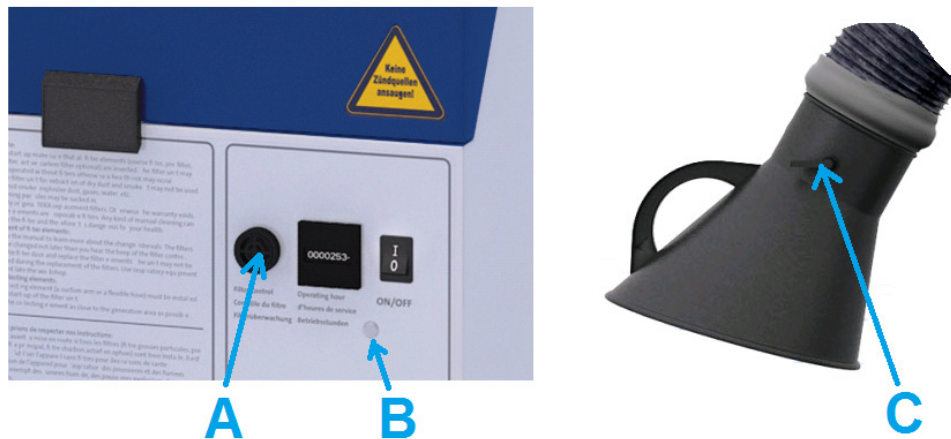
The dust collecting tray is installed in front of the baffle plate (illustration on the right). The bracket of the dust collecting tray must be hung in the front frame of the particle filter.

Finally the maintenance door is to be closed. The clamping brackets on the baffle plate must thereby move inside the housing.



3.4 Resetting of the pressure switch for the filter control

The „filtoo“ / „AirToo“ is equipped with a filter control as a standard feature which monitors the degree of saturation of the filter element. Details on this can be found in the separate operating manual of the „filtoo“ / „AirToo“. The hooter (A) begins to sound when the filter control is triggered.



The negative pressure in the device changes when the dust pre-separator is used and the filter control would then indicate a filter alarm at an early stage. Therefore, it is necessary to reset the pressure switch accordingly. Proceed as follows:

- The baffle plate and the collecting tray must be installed and the maintenance door must be closed as specified in chapter 3.3.
- Close the throttle valve (C) on the suction hood. The suction hood is located at the capturing element of the „filtoo“ / „AirToo“.
(A closed throttle valve in combination with new filter elements generates a negative pressure comparable to saturated filter elements with an opened throttle valve.)
- Remove the masking cap (B). Here the alignment of the pressure switch is located.
- Now turn on the „filtoo“ / „AirToo“. Change the alarm value of the pressure switch while the „filtoo“ / „AirToo“ is on. Therefore, you turn at the alignment of the pressure switch by inserting a torx screwdriver (⚙️ T25 – T27) or a flat-bladed screwdriver (🔪 size 3 – 3.5) into the alignment aperture.
Turn the alignment clockwise till the signal hooter stops. Now turn counter-clockwise till the signal hooter restarts to sound. In this position the pressure switch is optimally set.
- Reattach the masking cap at the „filtoo“ / „AirToo“.

4 Maintenance

The dust collecting tray must be cleaned at regular intervals. The intervals depend on the produced quantity of dust and thus cannot be predetermined.