

*The air purifiers*

**TEKA**

# CareMaster wall



(Page: 1 for product 97420116)

## Description

# CareMaster wall

Stationary welding fume filter suitable for up to two welding stations.

A stable steel plate construction with continuous powder coating guarantees a low maintenance operation even under rough conditions.

The gross particles are separated in the pre-filter. Afterwards the air is guided through the particle filter (separation efficiency = 99 %) where even fine fumes and dusts are separated. The tightly fitting lifting device guarantees an absolute impermeability as well as the separation efficiency of the filter unit.

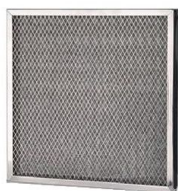
The unit is fitted with a high-capacity fan with a high negative pressure that guarantees a high volumetric flow even if the filter is saturated.

From a length of 5 m on, the suction arm / crane are fitted with an additional wall bracket.

## Properties

Volumetric flow (m <sup>3</sup> /h):	3.500
max. pressure (Pa):	2,500
Engine power (kW):	2.2
Supply voltage (V):	400
Connection frequency (Hz):	50
Automatic cleaning:	No
Width (mm):	665
Depth (mm):	681
Height (mm):	940
Colour:	RAL 7016

## Accessories



Wire mesh filter 610 x 610 x 15 mm in aluminium  
Product No.: 100008



Hepa filter H13, 610 x 610 x 292mm  
Product No.: 10030



Filter cassette H13, filter surface: 14m<sup>2</sup>  
Product No.: 100357



Exhaust ventilation hood, made from metal  
Product No.: 104901



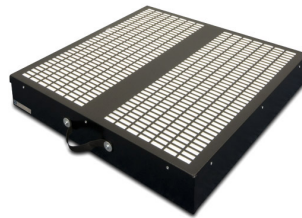
On/off switch via suction hood  
Product No.: 96313321



Lighting for 1 suction arm incl. hood  
Product No.: 96323



Lighting for 2 suction arms/cranes  
Product No.: 96324



Activated carbon filter  
Product No.: 97053



Adapter for extraction hood; diam.: 150  
Product No.: 66210



Adapter for extraction hood; diam 150 mm,  
Product No.: 66220



Protection grille (finely woven) for installation  
Product No.: 10372



Start-Stop Automatic  
Product No.: 150010016



Master-Slave-Control 32A (incl. Transf. for 24V AC)

Product No.: 150010032



Mater-Slave-Control 16A (incl. Transf. for 24V AC)

Product No.: 15001001602



Master slave junction box for controlling a motor

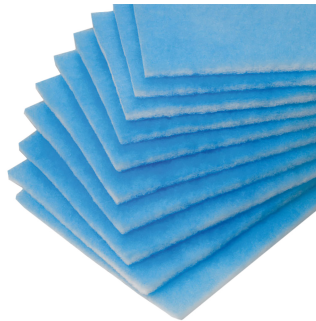
Product No.: 15001001604

### Replacement parts



Particle filter F9, 610 x 610 x 292 mm

Product No.: 10029



Pre-filter mats, pack of 10

Product No.: 10032



Exhaust ventilation hood diam. 150 mm

Product No.: 66200