

The air purifiers



Fan 3000 m³/h



Description

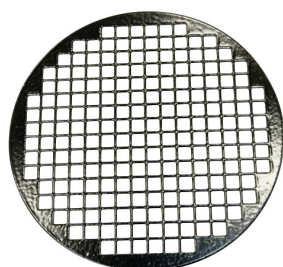
Fan 3000 m³/h

The stable construction qualifies the fan for continuous application. The fan has a high negative pressure of 1500 Pa even at high load. In delivery a snap fastener is included to connect suction arms.

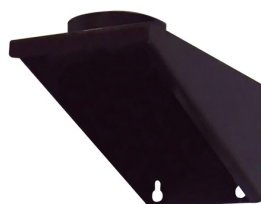
Properties

Volumetric flow (m ³ /h):	3.000
max. pressure (Pa):	1,500
Engine power (kW):	1.5
Supply voltage (V):	400
Connection frequency (Hz):	50
Current consumption (A):	3.5
Ansaugstutzen (mm):	NW 150
Ausblas:	NW 150
Sound level (dB(A)):	76
Weight (kg):	27
Width (mm):	449
Depth (mm):	438
Height (mm):	438

Accessories



Guard, diam.160mm
Product No.: 41501



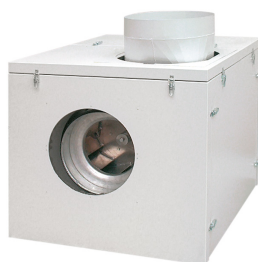
Wall bracket for TEKA fan,
Product No.: 96010



Protective motor switch
Product No.: 9620102



Connecting materials diam. 160 mm
Product No.: 96301

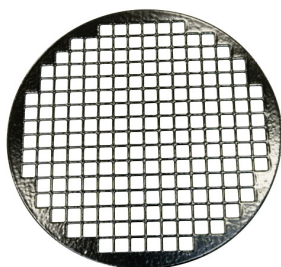


Sound proofing box
Product No.: 960101



Auto-Start-Stop with magnetic field sensor
Product No.: 963131220224

Replacement parts



Guard, diam.160mm
Product No.: 41501



Protective motor switch
Product No.: 9620102