

CartMaster IFA for wall mounting



(Page: 1 for product 97532)

Description

Product No.: 97532

€7,650.00*

excluding VAT

CartMaster IFA for wall mounting

Stationary cartridge filter unit which is IFA-certified in combination with all TEKA suction arms or cranes according to DIN EN 21904-1/-2.

The separation efficiency is = 99 %.

The unit corresponds to the security requirements for units of the welding fume category W3 (high alloy steels). If you handle the unit correctly, you can use it for circulating air operation because it fulfils the requirements for the exceptional rules according to the new German Hazardous Substances Ordinance (GefStoffV).

The unit is fitted with a high-capacity steel plate fan which is mounted on top of the device. When the fan is switched off, a consecutive cleaning is carried out. The fan has a high negative pressure that guarantees a high volumetric flow even if the filter is saturated.

A stable sheet steel construction with continuous powder coating guarantees a low maintenance operation even under rough conditions.

The specially developed dedusting system guarantees optimal separation efficiency during the whole operation.

The advantage of the Power-Spray- System is not only its low maintenance construction without rotating jets which are susceptible to wear, but also the low dedusting pressure and low consumption of compressed air. The dedusted particles are collected in a freely accessible dust collecting drawer and can be disposed of afterwards.

A baffle plate serves as protection device for the filter cartridges. The fumes and dusts are separated from the filter cartridges. They are coated ex works with a special filter agent. This increases their lifetime considerably compared to standard filter cartridges.

From a length of 5 m on, the suction arm/ crane is equipped with an additional wall bracket.

Properties

Volumetric flow [m³/h]:	3.500
max. pressure [Pa]:	3.000
Engine power (kW):	2,2
Supply voltage (V):	400
Connection frequency [Hz]:	25
Automatic cleaning:	yes
Sound level [dB(A)]:	72
Weight [kg]:	165
Width [mm]:	665
Depth [mm]:	681
Length [mm]:	580
Colour:	RAL 7016

Accessories



Exhaust ventilation hood
Product No.: 104901

€316.00*



On/off switch via suction hood
Product No.: 96313321

€290.00*



Lighting for 1 suction arm/crane
Product No.: 96323

€345.00*



Suction arm, 4m, diam.150mm
Product No.: 97603

€820.00*



Filter cartridge, type easy clean plus
Product No.: 6160600212508

€704.00*



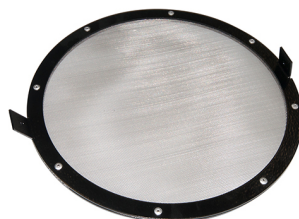
Adapter for extraction hood; diam.: 150
Product No.: 66210

€65.00*



Adapter for extraction hood; diam 150 mm,
Product No.: 66220

€65.00*



Protection grille (finely woven) for
installation
Product No.: 10372

€55.00*

Replacement parts



Filter cartridge, type standard,
Product No.: 6160600110008

€465.00*



Exhaust ventilation hood diam. 150 mm
Product No.: 66200

€185.00*



Adapter for extraction hood; diam.: 150
Product No.: 66210

€65.00*



Adapter for extraction hood; diam 150
mm,
Product No.: 66220

€65.00*



Cartridge protection NANNOX P50
Product No.: 68130000100

€35.00*